

# Engineering vs. Non-Engineering: Time Spent Exercising

## Exercise vs. Major

What is your major?

- Engineering  
 Non-Engineering

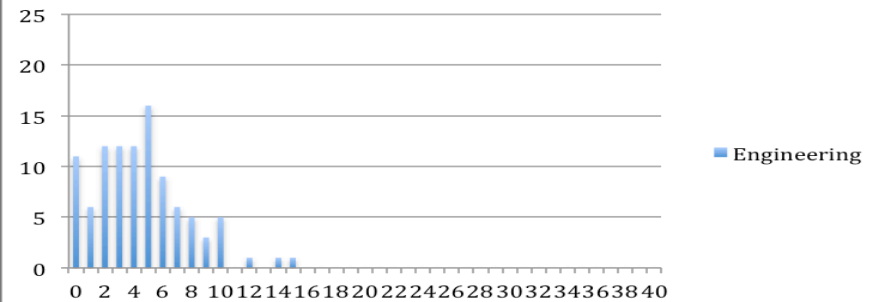
Approximately how many hours do you spend exercising per week?

Please answer with a number only.

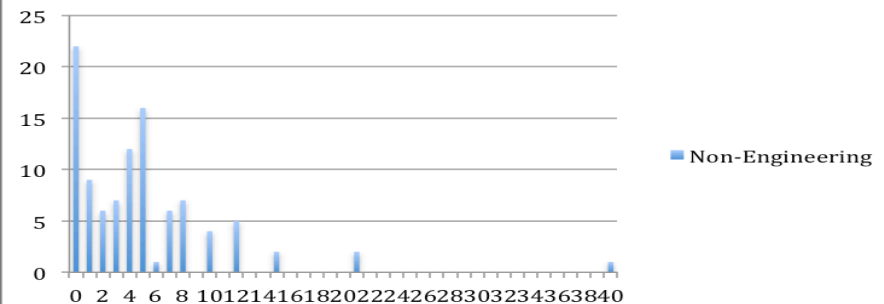
Submit

Mean	4.48	5.14
Median	4	4
Mode	5	0
Standard Deviation	3.167001577	5.906715917
Min	0	0
Max	15	40

### Engineering



### Non-Engineering



CI outlier-inclusive: [-1.9842, 0.6642]  
CI outlier-exclusive: [-1.4415, 0.8257]